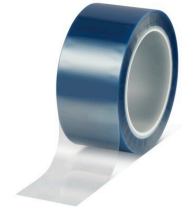




tesa[®] 50650 Conformable



Product Information

Blue polyester/silicone masking tape

Product Description

tesa[®] 50650 is a blue high-temperature tape features a polyester backing with a silicone adhesive. It provides the following qualities:

- High temperature resistance
- Sharp paint edge
- Very conformable for the use on irregular shapes
- Removable without leaving residues

Product Features

- High temperature resistance (up to 220°C for 30 minutes)
- Residue-free removability for masking and surface protection applications
- Good conformability, thin backing for sharp color edges
- The high-temperature tape features easy application and easy one-piece removal without leaving residues behind.
- The thin tape conforms well around irregular shapes, enables sharp color edges and offers excellent paint anchorage.

Application Fields

For masking off areas that are not to be coated during powder coating process.

Technical Information (average values)

The values in this section should be considered representative or typical only and should not be used for specification purposes.

Product Construction

- | | | | |
|--------------------|----------|-------------------|-------|
| • Backing material | PETP | • Total thickness | 55 µm |
| • Type of adhesive | silicone | | |

Properties/Performance Values

- | | | | |
|-----------------------|---------|--------------------|-----|
| • Elongation at break | 120 % | • Easy to remove | yes |
| • Tensile strength | 50 N/cm | • Hand tearability | low |

Adhesion to Values

- | | |
|---------|----------|
| • steel | 3.3 N/cm |
|---------|----------|



tesa[®] 50650 Conformable

Product Information

Additional Information

tesa[®] 50650 is also available on a special PET liner.

Disclaimer

tesa[®] products prove their impressive quality day in, day out in demanding conditions and are regularly subjected to strict controls. All information and recommendations are provided to the best of our knowledge on the basis of our practical experience. Nevertheless tesa SE can make no warranties, express or implied, including, but not limited to any implied warranty of merchantability or fitness for a particular purpose. Therefore, the user is responsible for determining whether the tesa[®] product is fit for a particular purpose and suitable for the user's method of application. If you are in any doubt, our technical support staff will be glad to support you.



For latest information on this product please visit <http://l.tesa.com/?ip=50650>