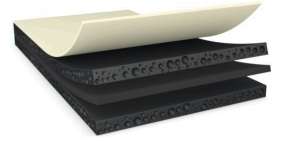




tesa[®] 75710

Product Information



100µm d/s black reinforced acrylic foam tape

Product Description

tesa[®] 75710 is a double-sided black tape with PET backing. It is equipped with a novel foamed shock absorbing adhesive.

Product Features

- Thickness: 100 µm
- *High shock performance
- High thermal shock resistance
- High bonding strength even on low surface energy materials
- Good anti-repulsion properties to prevent lifting
- Waterproofing
- Good reworkability and die-cut ability

Application Fields

- Demanding mounting applications with high requirements for impact resistance
- Mounting of waterproof designs
- Mounting of components

Technical Information (average values)

The values in this section should be considered representative or typical only and should not be used for specification purposes.

Product Construction

- | | | | |
|--------------------|------------------|----------------------|---------------------|
| • Backing | PETP | • Color | black |
| • Type of adhesive | modified acrylic | • Color of liner | transparent |
| • Type of liner | PET | • Thickness of liner | 50 µm |
| • Total thickness | 100 µm | • Weight of liner | 72 g/m ² |

Product Assortment

- | | |
|-------------------------|--|
| • Available thicknesses | 100µm, 150µm,
200µm, 250µm,
300µm, 350µm |
|-------------------------|--|



tesa[®] 75710

Product Information

Properties/Performance Values

- | | | | |
|-----------------------------------|-----------|-------------------------------------|--------|
| • Elongation at break | 100 % | • Static shear resistance at 40°C | good |
| • Ageing resistance (UV) | very good | • Temperature resistance long term | 80 °C |
| • Static shear resistance at 23°C | good | • Temperature resistance short term | 130 °C |

Adhesion to Values

- | | | | |
|------------------------|----------|------------------------|---------|
| • Glass (initial) | 7.5 N/cm | • PE (initial) | 5 N/cm |
| • Glass (after 3 days) | 9.5 N/cm | • PE (after 3 days) | 6 N/cm |
| • PC (initial) | 8 N/cm | • Steel (initial) | 10 N/cm |
| • PC (after 3 days) | 9 N/cm | • Steel (after 3 days) | 11 N/cm |

Disclaimer

tesa[®] products prove their impressive quality day in, day out in demanding conditions and are regularly subjected to strict controls. All information and recommendations are provided to the best of our knowledge on the basis of our practical experience. Nevertheless tesa SE can make no warranties, express or implied, including, but not limited to any implied warranty of merchantability or fitness for a particular purpose. Therefore, the user is responsible for determining whether the tesa[®] product is fit for a particular purpose and suitable for the user's method of application. If you are in any doubt, our technical support staff will be glad to support you.



For latest information on this product please visit <http://l.tesa.com/?ip=75710>