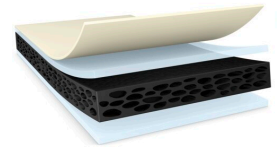




# tesa® 62166

## Product Information



300µm d/s black rapidly heat removable PE foam tape

## Product Description

tesa® 62166 is a black double-sided tape consisting of a soft PE foam backing with a special adhesive on open side and a tackified acrylic adhesive on covered side.

## Product Features

- Fast removable without residue of open side by heating
- Maintain stable removability of open side after repeated heating
- Excellent bonding reliability property of covered side
- Very good impact resistance
- Easy compression due to the conformable backing

## Application Fields

- Display bottom mounting on smart phone of curved OLED.
- Reinforcement under displays to improve device bonding reliability
- Precious component mounting
- Temporary fixation in process
- Mounting applications that emphasize reworkability

## Technical Information (average values)

The values in this section should be considered representative or typical only and should not be used for specification purposes.

## Product Construction

- |                    |           |                                   |                   |
|--------------------|-----------|-----------------------------------|-------------------|
| • Backing          | PE foam   | • Color                           | black             |
| • Type of adhesive | specialty | • Thickness of liner              | 50 µm             |
| • Type of liner    | PET film  | • Type of adhesive (covered side) | tackified acrylic |
| • Total thickness  | 300 µm    |                                   |                   |

## Properties/Performance Values

- |                                   |           |                                   |      |
|-----------------------------------|-----------|-----------------------------------|------|
| • Static shear resistance at 23°C | very good | • Static shear resistance at 40°C | good |
|-----------------------------------|-----------|-----------------------------------|------|



# tesa<sup>®</sup> 62166

## Product Information

### Adhesion to Values

• Aluminium (initial)	6.5 N/cm	• PC (covered side, after 14 days)	14.1 N/cm
• Aluminium (after 14 days)	7.3 N/cm	• PC (covered side, initial)	13.3 N/cm
• Aluminium (covered side, after 14 days)	11.6 N/cm	• Steel (initial)	8.7 N/cm
• Aluminium (covered side, initial)	9.6 N/cm	• Steel (after 14 days)	9.5 N/cm
• PC (initial)	8.8 N/cm	• Steel (covered side, after 14 days)	14.3 N/cm
• PC (after 14 days)	9 N/cm	• Steel (covered side, initial)	14 N/cm

### Disclaimer

tesa<sup>®</sup> products prove their impressive quality day in, day out in demanding conditions and are regularly subjected to strict controls. All information and recommendations are provided to the best of our knowledge on the basis of our practical experience. Nevertheless tesa SE can make no warranties, express or implied, including, but not limited to any implied warranty of merchantability or fitness for a particular purpose. Therefore, the user is responsible for determining whether the tesa<sup>®</sup> product is fit for a particular purpose and suitable for the user's method of application. If you are in any doubt, our technical support staff will be glad to support you.



For latest information on this product please visit <http://l.tesa.com/?ip=62166>