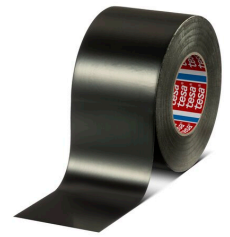




tesa[®] 4050 General Purpose PVC Duct Tape



Product Information

Conformable PVC Duct tape with good impact and abrasion resistance

Product Description

tesa[®] 4050 is a general purpose duct tape, comprised of a soft polyvinyl chloride (PVC) backing in combination with a rubber-based adhesive. The highly conformable backing has good impact and abrasion resistance as well as good electrical insulation properties. tesa[®] 4050 has a soft, rubber-like and flexible consistency, even at low temperatures of -20°C. The tape is weatherproof and offers a good UV-stability. The rubber adhesive holds well on a wide variety of surfaces. tesa[®] 4050 is available in the colors silver and black.

Benefits:

- Highly conformable backing with good impact and abrasion resistance, even at low temperatures
- Good electrical insulation properties and UV-stability
- RoHS and REACH compliant
- Lead free

Product Features

- The tape is weatherproof and offers a good UV-stability.
- The rubber adhesive holds well on a wide variety of surfaces.
- Highly conformable backing with good impact and abrasion resistance, even at low temperatures
- Good electrical insulation properties and UV-stability
- Flame retardant according to UL510 and DIN EN 60454-2 (VDE 0340-2):2008-05, clause 20
- RoHS and REACH compliant, lead free

Application Fields

- tesa[®] 4050 is ideally used for joining poly-sheeting used in the building industry
- The PVC Duct tape is suitable for applications such as joining and sealing flexible air-conditioning -ductwork
- tesa[®] 4050 can be used for sealing or pre-fabricated formwork

Technical Information (average values)

The values in this section should be considered representative or typical only and should not be used for specification purposes.

Product Construction

- | | | | |
|--------------------|----------------|-------------------|--------|
| • Backing | soft PVC | • Total thickness | 130 µm |
| • Type of adhesive | natural rubber | | |

Properties/Performance Values

- | | | | |
|-----------------------|---------|--------------------------------|--------|
| • Elongation at break | 210 % | • Dielectric breakdown voltage | 5200 V |
| • Tensile strength | 25 N/cm | • Hand tearability | good |

For latest information on this product please visit <http://l.tesa.com/?ip=04050>



tesa[®] 4050

General Purpose PVC Duct Tape

Product Information

Adhesion to Values

- Steel 2 N/cm

Disclaimer

tesa[®] products prove their impressive quality day in, day out in demanding conditions and are regularly subjected to strict controls. All information and recommendations are provided to the best of our knowledge on the basis of our practical experience. Nevertheless tesa SE can make no warranties, express or implied, including, but not limited to any implied warranty of merchantability or fitness for a particular purpose. Therefore, the user is responsible for determining whether the tesa[®] product is fit for a particular purpose and suitable for the user's method of application. If you are in any doubt, our technical support staff will be glad to support you.



For latest information on this product please visit <http://l.tesa.com/?ip=04050>