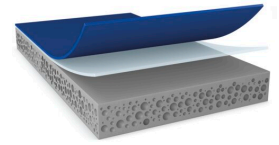




77311

Product Information



1.1 mm double-sided acrylic foam tape for mounting of automotive exterior parts

Product Description

tesa® ACX^{plus} 77311 is a double-sided acrylic foam tape for mounting of automotive exterior attachment parts. It is a two-layer designed product, coated on cover side with acrylic adhesive.

In addition, our product also has excellent adhesive properties when it comes to different types of OEM clear coats. Thanks to its viscoelastic acrylic foam core, tesa® ACX^{plus} 77311 is able to absorb and dissipate dynamic and static loads.

Main Features

- Excellent bonding stability with various kinds of clear coats
- PFAS / PFOS free Product
- Efficient and robust application at OEM
- Viscoelastic acrylic foam core to compensate for different thermal elongation of bonded parts
- Excellent wet-out property
- High humidity and UV resistance

Product Features

- Excellent bonding stability with various kinds of clear coats
- PFAS / PFOS free Product
- Efficient and robust application at OEM
- Viscoelastic acrylic foam core to compensate for different thermal elongation of bonded parts
- Excellent wet-out property
- High humidity and UV resistance

Application Fields

tesa® ACX^{plus} 77311 is suitable for a wide range of permanent exterior mounting applications like:

- Body side moldings and decorative trims
- Emblems
- Spoilers
- Antennas
- Pillar appliqués

To ensure the highest performance possible, our aim is to fully understand your application in order to provide the right product recommendation.

Technical Information (average values)

The values in this section should be considered representative or typical only and should not be used for specification purposes.

For latest information on this product please visit <http://l.tesa.com/?ip=77311>



77311

Product Information

Product Construction

• Backing	Acrylic foam	• Total thickness	1100 µm
• Type of adhesive	acrylic	• Color	grey
• Type of liner	PE		

Additional Information

- Static shear resistance tested with 25 mm x 25 mm tape on steel, 200 g weight
- PV 15 = royal blue siliconized HDPE film liner
- Temperature range: values are load dependent

Disclaimer

tesa® products prove their impressive quality day in, day out in demanding conditions and are regularly subjected to strict controls. All information and recommendations are provided to the best of our knowledge on the basis of our practical experience. Nevertheless tesa SE can make no warranties, express or implied, including, but not limited to any implied warranty of merchantability or fitness for a particular purpose. Therefore, the user is responsible for determining whether the tesa® product is fit for a particular purpose and suitable for the user's method of application. If you are in any doubt, our technical support staff will be glad to support you.



For latest information on this product please visit <http://l.tesa.com/?ip=77311>