

The background of the entire page is a photograph showing two individuals from the chest down, leaning over a table. They are examining a large, rectangular board with a light-colored wood-grain pattern. The person on the left is wearing a dark teal sweater and a blue and white striped wristband. The person on the right is wearing a light blue and white striped sweater. Their hands are resting on the surface of the board, which appears to be a melamine-faced board. The lighting is soft and even, highlighting the texture of the board and the clothing.

Next generation splicing of melamine impregnated papers

Increasing efficiency during paper processing for
melamine faced board production

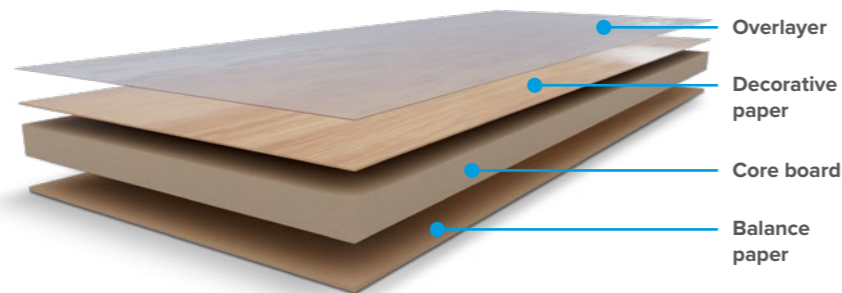
Tailor-made splicing for melamine impregnation lines

As world market leader for many splicing applications and with over 125 years of experience in coating technology and the production of self-adhesive system solutions, we have developed an in-depth understanding of our customers' processes and requirements. This allows us to offer high-level technical support and the ability to always choose or newly develop the right product for each individual application.

Decorative melamine faced boards are used in the furniture and flooring industry. They are made up of wood based panels covered by layers of paper material.

In case of laminate flooring this would typically be an overlay/wear layer, a decorative layer, and a balance paper layer. Depending on the layer and application, these papers are printed and impregnated with melamine resin.

While being processed through the impregnation line, papers - and applied splicing tapes - need to resist moisture and temperature.



Today, the demands that face splicing solutions are more challenging than ever: Different paper qualities, higher speeds, and the focus to increase output call for a new splicing tape generation. With our new, specially developed splicing tapes, we are able to tick all the boxes for more efficient processes:

Benefits of our new décor paper splicing tapes

One fits all
One tape for different paper qualities



Highest splice security ensures stable production and minimizes waste



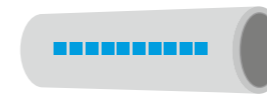
Time savings due to easy and fast job preparation



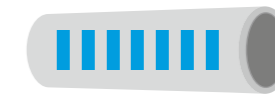
Resulting in **maximized overall process efficiency**



Product design



tesa® 54951 'premium' for easy and fast application: applied in one straight line, integrated segmented design



tesa® 51951 'classic' for manual tape application: applied in several individual strips of tape

Adhesive	Liner	Thickness [µm/mil]	Color	Temperature resistance	Tack	Shelf life	Transport and storage
Repulpable acrylic	Paper	105/4	Blue	220°C (430°F)	high	12 months	In original packaging at 15-30°C (59-86°F), 40-75% RH

Recommended splitting labels: tesa® 54242

How to apply tesa® 54951

Reel preparation



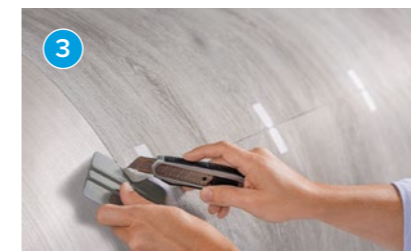
Ensure a straight paper edge for easy application.

Splitting labels application



Apply splitting labels in suitable distance over entire reel width.

Trim edges



To avoid damage to the web, trim the paper's edges on both sides.

Tape application



Apply the tape in a straight line, leave a gap of about one thumb's width to the edge of the roll.

Use a squeegee



Apply pressure to ensure excellent adhesion between tape and paper (best use a squeegee).

Remove the liner



Carefully remove the liner in the direction of the splitting labels. Ready to splice!



- Keep the tape in its original packaging until use
- Ensure a dry and clean surface prior to tape application
- Optimal application temperature: 15-40°C (59-104°F)

tesa® products prove their impressive quality day in, day out in demanding conditions and are regularly subjected to strict controls. All technical information and data above mentioned are provided to the best of our knowledge on the basis of our practical experience. They shall be considered as average values and are not appropriate for a specification. Therefore tesa SE can make no warranties, express or implied, including, but not limited to any implied warranty of merchantability or fitness for a particular purpose. The user is responsible for determining whether the tesa® product is fit for a particular purpose and suitable for the user's method of application. If you are in any doubt, our technical support staff will be glad to support you.



Certifications

Our company is focused on international quality, environmental, and occupational safety standards.

Please find more information regarding our certifications at:
www.tesa.com/certifications

tesa SE
Phone: +49 40 88899 0
tesa.com/company/locations

tesa.com