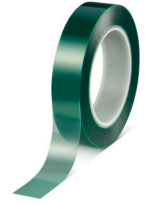




# tesa® 50600

## Product Information



### Green polyester/silicone masking tape

#### Product Description

tesa® 50600 is a green-translucent, high-temperature masking tape featuring a polyester backing with a silicone adhesive. tesa® 50600 is used for various applications, especially for masking during powder-coating processes or bonding and splicing applications of non-polar material. The tape enables sharp color edges and offers excellent paint anchorage. The masking tape's silicone adhesive system makes the tape extremely heat-resistant, withstanding extreme temperatures of up to 220°C/428°F

for as long as 30 minutes at a time. The high-temperature tape features easy application and easy one-piece removal without leaving residues behind. tesa® 50600 masking tape is also available in a version with a liner.

#### Product Features

- tesa® 50600 is also available on a special 50 µm thick PET liner (50600 PV1)
- Residue-free removability for masking and surface protection applications
- The high-temperature tape features easy application and easy one-piece removal without leaving residues behind
- The tape enables sharp color edges and offers excellent paint anchorage.
- The masking tape's silicone adhesive system makes the tape extremely heat-resistant, withstanding extreme temperatures of up to 220°C for as long as 30 minutes at a time.

#### Application Fields

- tesa® 50600 is used for masking off areas that are to be protected during powder-coating processes
- The high-temperature tape can withstand temperatures of up to 220°C/428°F for 30 minutes
- tesa® 50600 is used for bonding and splicing applications of non-polar material
- The masking tape features residue-free removal
- tesa® 50600 is also available on a special PET liner

#### Technical Information (average values)

The values in this section should be considered representative or typical only and should not be used for specification purposes.

#### Product Construction

- |                    |          |                   |          |
|--------------------|----------|-------------------|----------|
| • Backing          | PET      | • Total thickness | 80 µm    |
| • Type of adhesive | silicone |                   | 3.1 mils |



# tesa<sup>®</sup> 50600

## Product Information

### Properties/Performance Values

- |                                |                        |                                   |                  |
|--------------------------------|------------------------|-----------------------------------|------------------|
| • Elongation at break          | 110 %                  | • Hand tearability                | low              |
| • Tensile strength             | 75 N/cm<br>42.8 lbs/in | • Sharp color edge                | yes              |
| • Dielectric breakdown voltage | 4000 V                 | • Temperature resistance (30 min) | 220 °C<br>428 °F |
| • Easy to remove               | yes                    |                                   |                  |

### Adhesion to Values

- |         |                      |
|---------|----------------------|
| • Steel | 4 N/cm<br>36.5 oz/in |
|---------|----------------------|

### Additional Information

tesa<sup>®</sup> 50600 is also available on a special PET liner.

## Disclaimer

tesa<sup>®</sup> products prove their impressive quality day in, day out in demanding conditions and are regularly subjected to strict controls. All information and recommendations are provided to the best of our knowledge on the basis of our practical experience. Nevertheless tesa SE can make no warranties, express or implied, including, but not limited to any implied warranty of merchantability or fitness for a particular purpose. Therefore, the user is responsible for determining whether the tesa<sup>®</sup> product is fit for a particular purpose and suitable for the user's method of application. If you are in any doubt, our technical support staff will be glad to support you.



For latest information on this product please visit <http://l.tesa.com/?ip=50600>