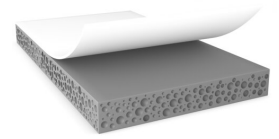




# tesa<sup>®</sup> 77220 Base Line



## Product Information

2.0mm double-side acrylic foam tape

## Product Description

tesa<sup>®</sup> ACX<sup>plus</sup> 77220 is a single layer acrylic foam tape designed for automotive attachment parts. Its viscoelastic acrylic foam core achieves reliable and high bonding performance on a variety of substrates and can withstand changing environmental conditions throughout the lifetime of a vehicle.

Also available in 0.4mm, 0.6mm, 0.8mm, 1.0mm, 1.2mm, 1.6mm thickness.

## Product Features

- Viscoelastic acrylic foam core compensates stress caused by different thermal elongation of bonded parts
- Good dynamic and static shear resistance over a wide temperature range
- PFAS / PFOS free Product
- High UV resistance
- Good converting properties

## Application Fields

tesa<sup>®</sup> ACX<sup>plus</sup> 77220 is suitable for permanent exterior mounting applications like:

- Body side moldings and decorative trims
- Emblems
- Spoilers
- Antennas
- Pillar appliques

To ensure the highest performance possible, our aim is to fully understand your application in order to provide the right product recommendation.

## Technical Information (average values)

The values in this section should be considered representative or typical only and should not be used for specification purposes.

## Product Construction

• Backing	Acrylic foam	• Total thickness	2000 µm
• Type of adhesive	none		78.7 mils
• Type of liner	PE	• Color	gray

## Properties/Performance Values

• Ageing resistance (UV)	very good	• Temperature range	-40 to 80 °C
• Humidity resistance	good		

For latest information on this product please visit <http://l.tesa.com/?ip=77220>



# tesa<sup>®</sup> 77220

## Base Line

### Product Information

#### Adhesion to Values

• ABS (initial)	9 N/cm 82.2 oz/in	• Steel (initial)	12 N/cm 109.6 oz/in
• ABS (after 3 days)	12 N/cm 109.6 oz/in	• Steel (after 3 days)	24 N/cm 219.3 oz/in
• ABS (covered side, after 3 days)	12 N/cm 109.6 oz/in	• Steel (covered side, after 3 days)	24 N/cm 219.3 oz/in
• ABS (covered side, initial)	9 N/cm 82.2 oz/in	• Steel (covered side, initial)	12 N/cm 109.6 oz/in

#### Additional Information

- Liner: PV31 = White siliconized HDPE film liner, works with tesa<sup>®</sup> 50699/50099 PSA tabbing tapes

### Disclaimer

tesa<sup>®</sup> products prove their impressive quality day in, day out in demanding conditions and are regularly subjected to strict controls. All information and recommendations are provided to the best of our knowledge on the basis of our practical experience. Nevertheless tesa SE can make no warranties, express or implied, including, but not limited to any implied warranty of merchantability or fitness for a particular purpose. Therefore, the user is responsible for determining whether the tesa<sup>®</sup> product is fit for a particular purpose and suitable for the user's method of application. If you are in any doubt, our technical support staff will be glad to support you.



For latest information on this product please visit <http://l.tesa.com/?ip=77220>