



INSTALLATION GUIDE

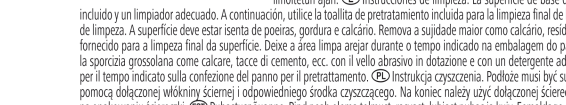
INSTALLATIONSANLEITUNG / GUIDE D'INSTALLATION / GUÍA DE INSTALACIÓN / ИНСТРУКЦИЯ ПО УСТАНОВКЕ / INSTRUKCJA OBSŁUGI / NÁVOD K POUŽITÍ



2 YES!



Notes on cleaning. The surface must be dry and free of dust, grease, and lime scale. Remove coarse dirt such as plaster residues, cement films etc. with the enclosed abrasive pad and a suitable cleaning agent. Complete the surface cleaning process with the enclosed pre-treatment cloth. Allow the cleaned area to dry for the time specified for the evaporation of the cleaning agent on the packaging of pre-treatment cloth.



cleaning agent. Complete the surface cleaning process with the enclosed pre-treatment cloth. Allow the cleaned area to dry for the time specified for the evaporation of the cleaning agent on the packaging of pre-treatment cloth.

Instructions for cleaning and application. The surface must be dry and free of dust, grease, and lime scale. Remove coarse dirt such as plaster residues, cement films etc. with the enclosed abrasive pad and a suitable cleaning agent. Complete the surface cleaning process with the enclosed pre-treatment cloth. Allow the cleaned area to dry for the time specified for the evaporation of the cleaning agent on the packaging of pre-treatment cloth.

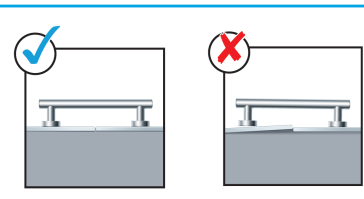
NO!



Cleaning agents containing silicone are not suitable for cleaning. Reineinigsmittel oder Silikonhaltige Reiniger sind zur Reinigung nicht geeignet. Les produits de nettoyage contenant du silicone ne conviennent pas pour le nettoyage.

3

SAFETY



3 Bathub handle for mounting on glazed bathroom tiles. In the interest of your personal safety please observe the following: The mounting surface must be dry and free of dust, grease and limescale. IPX4 rated, resistant to water splashes from any direction.

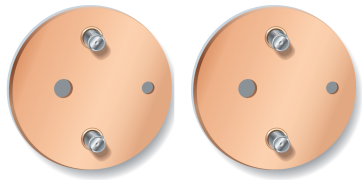
Notes on cleaning. The surface must be dry and free of dust, grease, and lime scale. Remove coarse dirt such as plaster residues, cement films etc. with the enclosed abrasive pad and a suitable cleaning agent. Complete the surface cleaning process with the enclosed pre-treatment cloth. Allow the cleaned area to dry for the time specified for the evaporation of the cleaning agent on the packaging of pre-treatment cloth.

montavimui ant glazuotųjų plytelių vonios kambarių. Pastaba dėl jūsų saugumo: paviršius turi būti lygus, kad būtų užtikrinta visų laikojimo galia. Atspari puršams pagal IPX4. Skirta sausiems paviršiams, ant kurių kartais patenka vandens puršalai (neturi būti tiesioginis vandens stovės arba tekančio vandens ant sienos), nes priesūniu atveju atsiranda atšokimo (nutukimo) rizika. Netinka montuoti po vandeniu arba ant kiti paviršius nei glazuotuosius plyteles.

4



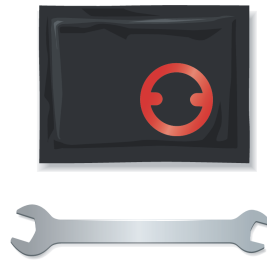
incl.



tesa® POWER.KIT BK 164-2

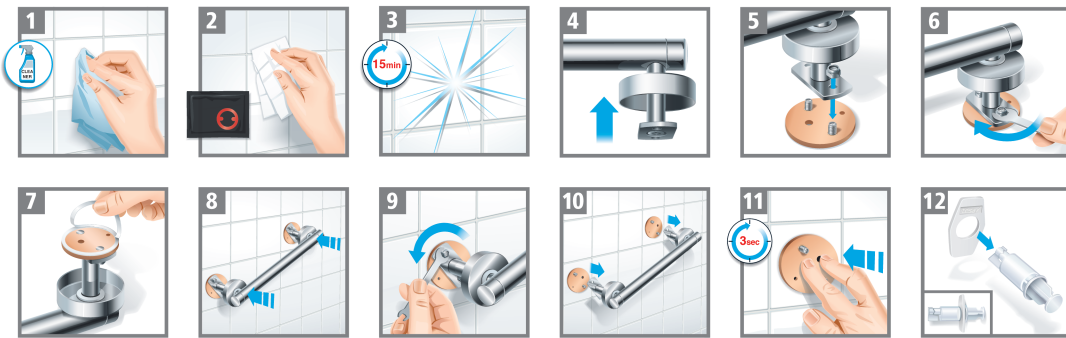


3 x 3g

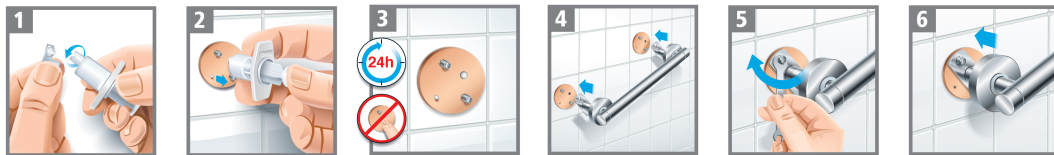


5

EASY START

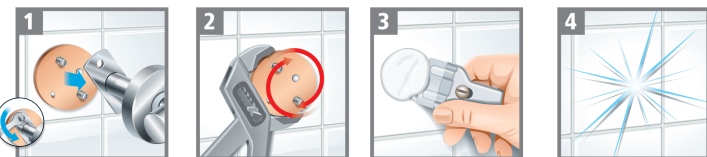


EASY ON



6

EASY OFF



tesa SE
Hugo-Kirchberg-Str. 1, D-22848 Norderstedt
© = reg. tm. tesa SE, www.tesa.com

RZ 1000589
44120-93000-00

