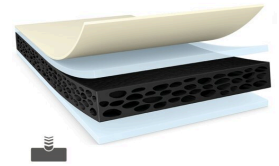




tesa® 66626

Product Information



300µm d/s high shear resistance and easy activation PE foam tape

Product Description

tesa® 66626 is a black double-sided tape consisting of a shock absorbing PE-foam backing equipped with a novel high shear resistance adhesive.

Product Features

- Excellent shear resistance and anti-lifting even under high temperature and high humidity
- Easy activation under limited pressure condition
- Superior push out strength by different substrates
- Outstanding shock performance
- Waterproofness
- Good rework ability and die cut ability

Application Fields

- Screen & touch panel mounting in electronics devices like smart phone, tablet, laptop and PC
- Display bottom mounting on smart phone of curved OLED
- Back cover mounting on smart phone and feature phone, especially mounting on uneven surface or curved design
- Mounting with waterproof purpose

Technical Information (average values)

The values in this section should be considered representative or typical only and should not be used for specification purposes.

Product Construction

- | | | | |
|--------------------|------------------|----------------------|-------------|
| • Backing | PE foam | • Color | black |
| • Type of adhesive | modified acrylic | • Color of liner | transparent |
| • Type of liner | PET | • Thickness of liner | 50 µm |
| • Total thickness | 300 µm | | |

Properties/Performance Values

- | | | | |
|--------------------------|---------|-----------------------------------|-----------|
| • Elongation at break | 280 % | • Humidity resistance | good |
| • Tensile strength | 17 N/cm | • Static shear resistance at 40°C | very good |
| • Ageing resistance (UV) | good | | |



tesa[®] 66626

Product Information

Adhesion to Values

• ABS (initial)	10.5 N/cm	• PE (initial)	5.2 N/cm
• ABS (after 14 days)	12.3 N/cm	• PE (after 14 days)	6 N/cm
• Glass (initial)	10 N/cm	• PMMA (initial)	11.5 N/cm
• Glass (after 14 days)	12.4 N/cm	• PMMA (after 14 days)	13.5 N/cm
• PC (initial)	11 N/cm	• Steel (initial)	10 N/cm
• PC (after 14 days)	14.3 N/cm	• Steel (after 14 days)	12.2 N/cm

Disclaimer

tesa[®] products prove their impressive quality day in, day out in demanding conditions and are regularly subjected to strict controls. All information and recommendations are provided to the best of our knowledge on the basis of our practical experience. Nevertheless tesa SE can make no warranties, express or implied, including, but not limited to any implied warranty of merchantability or fitness for a particular purpose. Therefore, the user is responsible for determining whether the tesa[®] product is fit for a particular purpose and suitable for the user's method of application. If you are in any doubt, our technical support staff will be glad to support you.



For latest information on this product please visit <http://l.tesa.com/?ip=66626>