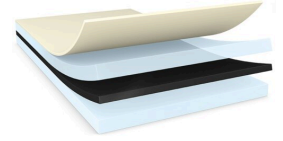




# tesa® 68814

## Product Information



100µm double sided LSE and tacky Mounting tape

### Product Description

tesa® 68814 is a black, double sided self-adhesive tape, consisting of a black PET backing. The modified acrylic adhesive ensures a very high tack and high bonding strength on polar and non-polar substrates.

### Product Features

- Thickness: 100µm
- Excellent bonding strength, even on LSE and rough substrates
- Excellent tack and fast activation
- Very good shock resistance
- High push-out resistance
- Black color for easy detection or design purposes

### Application Fields

- Component mounting
- Speaker mesh mounting
- Battery mounting
- Lens mounting

### Technical Information (average values)

The values in this section should be considered representative or typical only and should not be used for specification purposes.

### Product Construction

- |                    |                  |                      |             |
|--------------------|------------------|----------------------|-------------|
| • Backing          | PET film         | • Color              | black       |
| • Type of adhesive | modified acrylic | • Color of liner     | transparent |
| • Type of liner    | PET film         | • Thickness of liner | 50 µm       |
| • Total thickness  | 100 µm           |                      |             |

### Properties/Performance Values

- |                          |           |                                     |           |
|--------------------------|-----------|-------------------------------------|-----------|
| • Elongation at break    | 50 %      | • Tack                              | very good |
| • Tensile strength       | 20 N/cm   | • Temperature resistance long term  | 100 °C    |
| • Ageing resistance (UV) | very good | • Temperature resistance short term | 200 °C    |
| • Humidity resistance    | good      |                                     |           |



# tesa<sup>®</sup> 68814

## Product Information

### Adhesion to Values

• PC (initial)	12 N/cm	• PP (initial)	11 N/cm
• PC (after 14 days)	13 N/cm	• PP (after 14 days)	11.5 N/cm
• PE (initial)	7 N/cm	• Steel (initial)	13.5 N/cm
• PE (after 14 days)	8 N/cm	• Steel (after 14 days)	14 N/cm

### Additional Information

liner variants: PV30 (double PET liner), PV40 (white glassine paper liner with red tesa logo)

### Disclaimer

tesa<sup>®</sup> products prove their impressive quality day in, day out in demanding conditions and are regularly subjected to strict controls. All information and recommendations are provided to the best of our knowledge on the basis of our practical experience. Nevertheless tesa SE can make no warranties, express or implied, including, but not limited to any implied warranty of merchantability or fitness for a particular purpose. Therefore, the user is responsible for determining whether the tesa<sup>®</sup> product is fit for a particular purpose and suitable for the user's method of application. If you are in any doubt, our technical support staff will be glad to support you.



For latest information on this product please visit <http://l.tesa.com/?ip=68814>