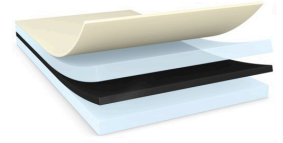




# tesa® 61815

## Product Information



300µm double-sided black mounting tape with superior shock and push-out performance.

## Product Description

tesa® 61815 is a double-sided self-adhesive tape with a black PET backing. Ideal for cover lens and touch panel mounting, it provides superior shock and push-out performance. Its special acrylic adhesive and versatility makes it perfect for various surfaces.

## Product Features

- Provides high bonding strength
- The push-out resistance keeps your materials securely in place, even under pressure
- Good LSE performance for a variety of low surface energy materials
- With high shock resistance, tesa® 61815 provides good durability and withstands shocks and vibrations
- Black color for easy detection or to match design requirements
- Resistant to challenging environmental conditions, ensuring durability and performance

## Application Fields

- Ideal for cover lens mounting in mobile phones, providing a secure and reliable attachment
- Perfect for touch panel mounting, offering high bonding strength and good shock resistance

## Technical Information (average values)

The values in this section should be considered representative or typical only and should not be used for specification purposes.

## Product Construction

- |                    |                  |                      |                     |
|--------------------|------------------|----------------------|---------------------|
| • Backing          | PET film         | • Color              | black               |
| • Type of adhesive | modified acrylic | • Color of liner     | transparent         |
| • Type of liner    | PET              | • Thickness of liner | 50 µm               |
| • Total thickness  | 300 µm           | • Weight of liner    | 70 g/m <sup>2</sup> |

## Properties/Performance Values

- |                                   |           |                                     |        |
|-----------------------------------|-----------|-------------------------------------|--------|
| • Elongation at break             | 80 %      | • Static shear resistance at 40°C   | good   |
| • Tensile strength                | 140 N/cm  | • Tack                              | good   |
| • Ageing resistance (UV)          | very good | • Temperature resistance long term  | 100 °C |
| • Humidity resistance             | very good | • Temperature resistance short term | 200 °C |
| • Static shear resistance at 23°C | good      |                                     |        |



# tesa<sup>®</sup> 61815

## Product Information

### Adhesion to Values

- |                      |         |                         |         |
|----------------------|---------|-------------------------|---------|
| • PC (initial)       | 18 N/cm | • Steel (initial)       | 20 N/cm |
| • PC (after 14 days) | 22 N/cm | • Steel (after 14 days) | 21 N/cm |

### Disclaimer

tesa<sup>®</sup> products prove their impressive quality day in, day out in demanding conditions and are regularly subjected to strict controls. All information and recommendations are provided to the best of our knowledge on the basis of our practical experience. Nevertheless tesa SE can make no warranties, express or implied, including, but not limited to any implied warranty of merchantability or fitness for a particular purpose. Therefore, the user is responsible for determining whether the tesa<sup>®</sup> product is fit for a particular purpose and suitable for the user's method of application. If you are in any doubt, our technical support staff will be glad to support you.



For latest information on this product please visit <http://l.tesa.com/?ip=61815>