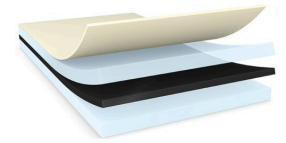




# tesa® 61210

## Product Information



100µm double sided black chemical resistant filmic tape

### Product Description

tesa® 61210 is a double sided self-adhesive tape consisting of a black PET backing and a special chemical resistant adhesive.

### Product Features

- Excellent chemical resistance to different polar and non polar chemicals
- Excellent shock resistance
- Excellent converting performance due to PET backing
- Double PET liner
- Halogen-freeness
- Skin-compatible (ISO 10993-10:2010; ISO 10993-5:2009)

### Application Fields

- Cover glass mounting in wearable devices
- Mounting of parts in electronic devices, e.g. keyboard mounting

### Technical Information (average values)

The values in this section should be considered representative or typical only and should not be used for specification purposes.

### Product Construction

- |                    |           |                   |             |
|--------------------|-----------|-------------------|-------------|
| • Backing          | PETP      | • Total thickness | 100 µm      |
| • Type of adhesive | specialty | • Color           | black       |
| • Type of liner    | PET       | • Color of liner  | transparent |

### Properties/Performance Values

- |                          |           |                                     |        |
|--------------------------|-----------|-------------------------------------|--------|
| • Elongation at break    | 50 %      | • Softener resistance               | good   |
| • Tensile strength       | 20 N/cm   | • Tack                              | medium |
| • Ageing resistance (UV) | very good | • Temperature resistance long term  | 70 °C  |
| • Chemical Resistance    | very good | • Temperature resistance short term | 120 °C |
| • Humidity resistance    | very good |                                     |        |



# tesa<sup>®</sup> 61210

## Product Information

### Adhesion to Values

|                             |           |                         |           |
|-----------------------------|-----------|-------------------------|-----------|
| • Aluminium (initial)       | 8.9 N/cm  | • PC (after 14 days)    | 16.8 N/cm |
| • Aluminium (after 14 days) | 11.1 N/cm | • PE (initial)          | 4.5 N/cm  |
| • Glass (initial)           | 12.9 N/cm | • PE (after 14 days)    | 7 N/cm    |
| • Glass (after 14 days)     | 13.2 N/cm | • Steel (initial)       | 12.4 N/cm |
| • PC (initial)              | 10.3 N/cm | • Steel (after 14 days) | 13.2 N/cm |

### Disclaimer

tesa<sup>®</sup> products prove their impressive quality day in, day out in demanding conditions and are regularly subjected to strict controls. All information and recommendations are provided to the best of our knowledge on the basis of our practical experience. Nevertheless tesa SE can make no warranties, express or implied, including, but not limited to any implied warranty of merchantability or fitness for a particular purpose. Therefore, the user is responsible for determining whether the tesa<sup>®</sup> product is fit for a particular purpose and suitable for the user's method of application. If you are in any doubt, our technical support staff will be glad to support you.



For latest information on this product please visit <http://l.tesa.com/?ip=61210>