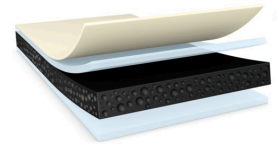




# tesa® 73817

## Product Information



350µm double sided acrylic foam tape

### Product Description

tesa® 73817 is a black double-sided tape consisting of a high shock absorbing acrylic foam backing and easy activation adhesive on both sides.

### Product Features

- Excellent bonding performance on rough substrate under low pressure
- Good inner force resistance under harsh environments
- High impact resistance
- Good anti-repulsion performance
- High sealing ability with superior waterproofness (IPX8)

### Application Fields

- Demanding lens or screen and back cover mounting applications with high requirements for impact resistance.
- Mounting of components with critical demand on impact resistance, e.g. speaker, battery
- Mounting of waterproof designs, e.g. Camera lens mounting
- Mounting of 3D curved or ultra slim bezel designs.

### Technical Information (average values)

The values in this section should be considered representative or typical only and should not be used for specification purposes.

### Product Construction

- |                    |                   |                      |             |
|--------------------|-------------------|----------------------|-------------|
| • Backing          | Acrylic foam      | • Color              | black       |
| • Type of adhesive | tackified acrylic | • Color of liner     | transparent |
| • Type of liner    | PET film          | • Thickness of liner | 50 µm       |
| • Total thickness  | 350 µm            |                      |             |

### Properties/Performance Values

- |                                   |           |                                   |           |
|-----------------------------------|-----------|-----------------------------------|-----------|
| • Static shear resistance at 23°C | very good | • Static shear resistance at 40°C | very good |
|-----------------------------------|-----------|-----------------------------------|-----------|

### Adhesion to Values

- |                        |           |                        |           |
|------------------------|-----------|------------------------|-----------|
| • Glass (initial)      | 18.1 N/cm | • PC (after 3 days)    | 29.7 N/cm |
| • Glass (after 3 days) | 19.3 N/cm | • Steel (initial)      | 16.8 N/cm |
| • PC (initial)         | 20.2 N/cm | • Steel (after 3 days) | 19.3 N/cm |

For latest information on this product please visit <http://l.tesa.com/?ip=73817>



# tesa<sup>®</sup> 73817

## Product Information

### Disclaimer

tesa<sup>®</sup> products prove their impressive quality day in, day out in demanding conditions and are regularly subjected to strict controls. All information and recommendations are provided to the best of our knowledge on the basis of our practical experience. Nevertheless tesa SE can make no warranties, express or implied, including, but not limited to any implied warranty of merchantability or fitness for a particular purpose. Therefore, the user is responsible for determining whether the tesa<sup>®</sup> product is fit for a particular purpose and suitable for the user's method of application. If you are in any doubt, our technical support staff will be glad to support you.



For latest information on this product please visit <http://l.tesa.com/?ip=73817>