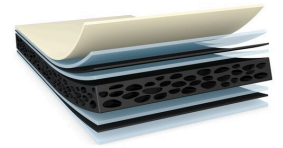




# tesa<sup>®</sup> 66425

## Product Information



tesa<sup>®</sup> 66425 280µm d/s Cuttable foam tape

### Product Description

tesa<sup>®</sup> 66425 is a black multilayer tape consisting of a soft PE foam backing equipped with PET reinforcement and easily reworkable adhesive on both sides. It is specially designed to enable rework at non-thermal condition for screen related application.

### Product Features

- All in one solution provided
- Super soft foam for easy cuttability
- PET reinforcement for very good die cuttability and rework ability
- Strong push out strength
- Outstanding shear resistance withstand challenging environment conditions

### Application Fields

- Screen and lens mounting in tablet and notebook
- Touch panel and display module mounting in tablet and notebook
- Demanding mounting applications
- All in one solution required application

### Technical Information (average values)

The values in this section should be considered representative or typical only and should not be used for specification purposes.

### Product Construction

• Backing	PE foam	• Color	black
• Type of adhesive	modified acrylic	• Color of liner	transparent
• Type of liner	PET	• Thickness of liner	50 µm
• Total thickness	280 µm		

### Properties/Performance Values

• Ageing resistance (UV)	very good	• Static shear resistance at 23°C	good
• Humidity resistance	very good	• Static shear resistance at 40°C	good

### Adhesion to Values

• Glass (initial)	3.8 N/cm	• PC (after 14 days)	4.8 N/cm
• Glass (after 14 days)	5 N/cm	• Steel (initial)	4 N/cm
• PC (initial)	2.9 N/cm	• Steel (after 14 days)	5.4 N/cm

For latest information on this product please visit <http://l.tesa.com/?ip=66425>



# tesa<sup>®</sup> 66425

## Product Information

### Disclaimer

tesa<sup>®</sup> products prove their impressive quality day in, day out in demanding conditions and are regularly subjected to strict controls. All information and recommendations are provided to the best of our knowledge on the basis of our practical experience. Nevertheless tesa SE can make no warranties, express or implied, including, but not limited to any implied warranty of merchantability or fitness for a particular purpose. Therefore, the user is responsible for determining whether the tesa<sup>®</sup> product is fit for a particular purpose and suitable for the user's method of application. If you are in any doubt, our technical support staff will be glad to support you.



For latest information on this product please visit <http://l.tesa.com/?ip=66425>