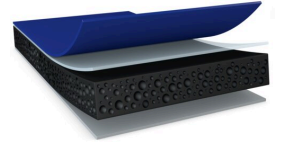




74712 Seal Line



제품 정보

1.2mm 열압착 폼 테이프 - 차량 도어 씰링과 같은 까다로운 씰링 애플리케이션 마운팅용

제품 설명

tesa® ACX^{plus} 74712 Seal Line is a deep black acrylic foam tape for permanent mounting of seals, mainly on automotive clearcoat. It has a heat-activatable adhesive on the non-liner side. The adhesive gets activated by hot air or near-infrared when applying it onto the PP/EPDM, PP, TPV, or TPE seal.

Compared to the conventional process with primer, tesa® ACX^{plus} 74712 Seal Line ensures a highly secure bond to the rubber profile, enables a higher application speed than using primer, and supports a more environmentally friendly production process.

By introducing a functional layer at the liner side, tesa® ACX^{plus} 74712 can be used on various automotive clearcoats even without the use of adhesion promoters. The acrylic foam core ensures outstanding dimensional stability even at high temperatures and loads. At the same time, by its viscoelastic properties, tesa® ACX^{plus} 74712 Seal Line absorbs and dissipates dynamic and static loads. This also allows compensation of extreme physical stress caused by the different thermal elongation of bonded parts in rapidly changing temperatures.

The deep black color provides an enhanced appearance and high design flexibility.

특성

- Efficient and secure bonding of the heat-activatable layer to seals
- Application on clearcoats without primer
- Final peel adhesion reached after 24 h
- Enhanced temperature resistance
- Robust shear performance even at high temperatures
- PFAS / PFOS free product
- Strong bonding of the heat-activatable layer to acrylic core that withstands even humidity and heat
- Closed cell acrylic foam core for reliable sealing to prevent water penetration
- High humidity and UV resistance
- Excellent cold shock performance

Applications

tesa® ACX^{plus} 74712 Seal Line can be widely used for all kinds of automotive seal applications within a temperature range of -40 °C to 90 °C.



74712 Seal Line

제품 정보

Technical Information (average values)

The values in this section should be considered representative or typical only and should not be used for specification purposes.

제품 구조

• 기재 소재	아크릴 폼	• 컬러	deep black
• 점착제 종류	아크릴	• 이형지 색깔	파랑
• 이형지 종류	PE/PP protection film	• 점착제 종류 to Seal	heat-activatable
• 총두께	12000 µm		

제품군

• 가능한 색상	deep black
----------	------------

속성 / 성능 값

• 연신률	500 %	• 내습성	very good
• 인장강도	19 N/cm	• 노후성 (UV)	very good

접착력(수치)

• Adhesion to Clear coat (covered side, after 3 days)	36 N/cm	• Steel접착력 (3일 경과)	36 N/cm
• Clear Coat접착력 (20분 경과)	18 N/cm	• Adhesion to TPE (T-Peel, after 3 days warm / humid)	16 N/cm
• Steel접착력 (초기)	36 N/cm	• Adhesion to TPE (T-Peel, after 3 days)	16 N/cm

추가정보

- PV29 = filmic liner in royal blue, siliconized to adhesive side and silicone free to tabbing side, works with both heat and adhesive tabbing tapes. Liner removal force 45 cN/cm.
- Adhesion to steel and tesa standard clearcoat: measured at 90°, 300mm/min, tape reinforced with aluminium foil
- T-Peel test: heat-activatable adhesive to standard TPE seal, 300 mm/min
- Warm/humid storage: 72 h at 40°C and 100% r.h.



74712 Seal Line

제품 정보

공지사항

테사에서 판매하는 제품들은 엄격한 품질관리를 통해 생산되고 있으며, 테사에서 제공하는 전문적인 정보들은 오랜기간의 경험을 기반으로 하고 있습니다. 관련 정보는 평균값에 근거하며, 특별한 용도에는 적합하지 않을 수 있습니다. tesa SE는 관련 정보의 명시적 또는 암묵적인 보증을 하는 것은 아니며, 이는 특별한 용도에 적합성 또는 상업성과 관련한 어떠한 암묵적인 보증도 포함하지 않습니다. 사용자는 제품을 사용하기 전에 적용부위에 적합한지를 검토하시기 바라며, 기타 문의사항이 있으시면 저희 직원에게 문의 바랍니다



관련제품 최신자료는 다음의 경로를 클릭하세요 <http://l.tesa.com/?ip=74712>