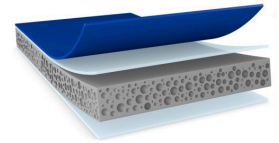




# tesa® ACXplus 79011

## Product Information



1.1 mm double-sided acrylic foam tape for mounting of automotive exterior attachment part

## Product Description

tesa® ACX<sup>plus</sup> 79011 is a double-sided acrylic foam tape for mounting of automotive exterior attachment parts. It is a triple-layer product, coated on both sides with LSE adhesives. It can help eliminate the primer in the process. Its high-performance LSE adhesive creates an efficient and secure bond to typical automotive attachment parts made of LSE (like PP and PP/EPDM) and MSE (like PMMA) plastics without primer. In addition, our product also has excellent adhesive properties when it comes to 95°C high temperature resistance. Thanks to its viscoelastic acrylic foam core, tesa® ACX<sup>plus</sup> 79011 New Primerless Line has the ability to absorb and dissipate dynamic and static loads.

- 0.8 mm and 1.5 mm thicknesses are also available

## Product Features

Good performance on LSE plastics and difficult-to-bond clear coats without primer

- Excellent bonding stability with long term temperature resistance up to 95°C
- PFAS / PFOS free Product
- Efficient and robust application
- Viscoelastic acrylic foam core to compensate for different thermal elongation of bonded parts
- Good wet-out property
- High humidity and UV resistance

LSE: low surface energy

MSE: medium surface energy

## Application Fields

tesa® ACX<sup>plus</sup> 79011 New Primerless Line is suitable for a wide range of permanent exterior mounting applications. To ensure the highest performance possible, our aim is to fully understand your application (including the substrates involved) in order to provide the right product recommendation.

Example applications are:

- Rocker Panel
- Decorative trims
- Spoilers
- Wheel arches
- Door fender



# tesa<sup>®</sup> ACXplus 79011

## Product Information

### Technical Information (average values)

The values in this section should be considered representative or typical only and should not be used for specification purposes.

### Product Construction

• Backing	Acrylic foam	• Total thickness	1100 µm
• Type of adhesive	LSE	• Color	gray
• Type of liner	PE	• Color of liner	blue

### Properties/Performance Values

• Ageing resistance (UV)	good	• Static shear resistance at 90°C	very good
• Chemical Resistance	good	• Temperature range	-40 to 95 °C
• Cold-shock resistance	very good	• Temperature resistance long term	95 °C
• Humidity resistance	very good	• Temperature resistance short term	120 °C

### Adhesion to Values

• ABS (initial)	35 N/cm	• PP (after 3 days)	40 N/cm
• ABS (after 3 days)	40 N/cm	• Steel (initial)	40 N/cm
• PP (initial)	30 N/cm	• Steel (after 3 days)	40 N/cm

## Disclaimer

tesa<sup>®</sup> products prove their impressive quality day in, day out in demanding conditions and are regularly subjected to strict controls. All information and recommendations are provided to the best of our knowledge on the basis of our practical experience. Nevertheless tesa SE can make no warranties, express or implied, including, but not limited to any implied warranty of merchantability or fitness for a particular purpose. Therefore, the user is responsible for determining whether the tesa<sup>®</sup> product is fit for a particular purpose and suitable for the user's method of application. If you are in any doubt, our technical support staff will be glad to support you.



For latest information on this product please visit <http://l.tesa.com/?ip=79011>