



Complete package for high performance bonding

tesa® ACX^{plus} assortment

tesa® ACX^{plus} creates new possibilities

Constructive and permanent bonding can be a challenge in almost every industry. For many applications, high-tech materials need to be bonded without affecting their special structures and properties. With our double-sided high performance tapes, you can easily and quickly create a long-lasting bond of dissimilar materials.

Rethink design options with tesa® ACX^{plus}



Forget conventional fastening methods

Replace screws, bolts, rivets, welds, or liquid glue with our double-sided acrylic foam tapes.

Optimize your production process

Save time with the fast and clean tape application process.

Improve the visual appearance of your products

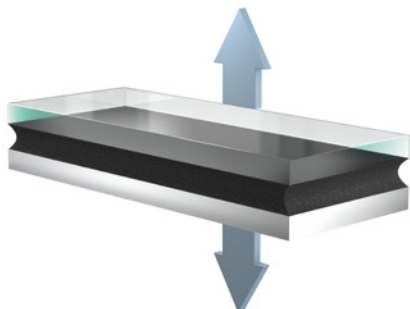
Achieve an aesthetically pleasing design, due to invisible fastening without damaging the material.

Mechanical features of our tesa® ACX^{plus} assortment

Two key features secure a reliable and strong bond for your products:

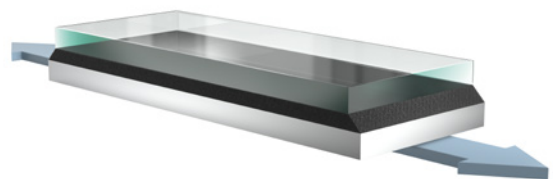
Inner core strength

The high bonding performance of tesa® ACX^{plus} is based on its viscoelasticity. This leads to elastic and viscous characteristics, which provides the strength for a constructive and permanent bond.



Stress dissipation

The viscoelastic properties compensate stresses, including static and dynamic loads, and ensure a secure, durable bond over the product's life cycle.



Our specialized tesa® ACX^{plus} assortment

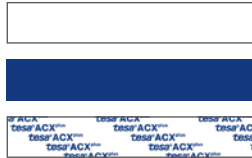
For powerful, long-lasting bonds, even on materials with different surface characteristics. Our products are offered in different thicknesses to fulfill design gap requirements or compensate for rough and uneven surfaces. tesa® ACX^{plus} are high performing acrylic foam tapes for permanent bonding applications.

tesa® ACX^{plus} 704x

The acrylic core tape is available in **gray and white**, and is recommended for indoor applications. Both color options adapt very well to metal and plastic surfaces and avoid reflections on translucent and decorative elements.

Liner options

- PV26: PE-coated paper
- PV28: Silicone-free film
- PV48: Silicone-free film

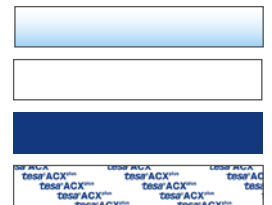


tesa® ACX^{plus} 705x

This product is a **transparent** acrylic core tape and ideal for bonding of transparent or translucent materials. If necessary for the application, we offer this product with adhesive neutralized edges.

Liner options

- PV12: Siliconised PET
- PV26: PE-coated paper
- PV28: Silicone-free film
- PV48: Silicone-free film



tesa® ACX^{plus} 706x

Our black foam tape combines **high adhesion levels** on hard-to-bond substrates with resistance to plasticizer migration and is recommended for indoor applications.

Liner options

- PV22: PE-coated paper
- PV24: Silicone-free film



tesa® ACX^{plus} 707x

An **outstanding cold shock performance** down to $-40\text{ }^{\circ}\text{C}$ is one of the key features of this black acrylic foam tape. A secure and durable bond, even in outdoor conditions, is achieved in combination with our adhesion promoters.*

Liner options

- PV22: PE-coated paper
- PV24: Silicone-free film



* applicable for all tapes $\leq 2000\text{ }\mu\text{m}$

Did you know?

tesa® flameXtinct 4506x is a double-sided acrylic core tape with proven flame retardent characteristics. The white product with a PV26 release liner is available in 800 μm and 1200 μm . Our tesa® flameXtinct family also includes a double-sided PE foam, a thin filmic and three non-woven tapes.

The products offer the following:

- Halogen-free
- UL94 and FMVSS 302 compliant



Especially for converters and industrial distributors

tesa® ACX^{plus} Multi Purpose (MP) is our acrylic foam tape family, that is only dedicated for converters and industrial distributors with converting equipment. The products are recommended for indoor multi-purpose applications and are available in three colors and four thicknesses.

Transparent:

- tesa® ACX^{plus} 725x MP

Gray:

- tesa® ACX^{plus} 727x MP

Black:

- tesa® ACX^{plus} 728x MP



tesa® Adhesion Promoter: surface pre-treatment for an optimal bonding performance



tesa® 60150 Universal

tesa® 60151 Glass

tesa® 60153 Fast Cure

tesa® 60155 EcoBond

	tesa® 60150 Universal	tesa® 60151 Glass	tesa® 60153 Fast Cure	tesa® 60155 EcoBond
Color	Light-yellow	Transparent	Yellow	Transparent
Available in	1 l & 100 ml	1 l & 100 ml	1 l & 100 ml	1 l
UV traceability	Yes	No	Yes	No
Recommended substrates	Metals, plastics, coated glass	Glass	Metals, plastics, coated glass	Metals, coated glass
Application tools	Melamin sponge, lint-free cloth	Lint-free cloth	Melamin sponge, lint-free cloth	Lint-free cloth
Recommended for	Indoor & outdoor	Indoor & outdoor	Indoor & outdoor	Indoor



Visit our website for more detailed information on tesa® ACX^{plus} products.
www.tesa.com/ACXplus

Check out more details by clicking on the product name.



tesa® products prove their impressive quality day in, day out in demanding conditions and are regularly subjected to strict controls. All technical information and data above mentioned are provided to the best of our knowledge on the basis of our practical experience. They shall be considered as average values and are not appropriate for a specification. Therefore tesa SE can make no warranties, express or implied, including, but not limited to any implied warranty of merchantability or fitness for a particular purpose. The user is responsible for determining whether the tesa® product is fit for a particular purpose and suitable for the user's method of application. If you are in any doubt, our technical support staff will be glad to support you.

Our product offer

Product	Thickness [μm]	Color	Adhesive characteristics	Product design	Adhesion to steel [N/cm] after 72h dwell time
tesa® ACX^{plus} 704x					
tesa® ACX ^{plus} 7042	500	Gray & white	Filled pure acrylic		24
tesa® ACX ^{plus} 7043	640				29
tesa® ACX ^{plus} 7044	1000				36
tesa® ACX ^{plus} 7045	1200				38
tesa® ACX ^{plus} 7048	2000				44
tesa® ACX^{plus} 705x					
tesa® ACX ^{plus} 7054	500	Transparent	Solid pure acrylic		18
tesa® ACX ^{plus} 7055	1000				24
tesa® ACX ^{plus} 7056	1500				26
tesa® ACX ^{plus} 7058	2000				27
tesa® ACX ^{plus} 75530	3000				30
tesa® ACX^{plus} 706x					
tesa® ACX ^{plus} 7062	500	Black	Foamed tackified acrylic		32
tesa® ACX ^{plus} 7063	800				40
tesa® ACX ^{plus} 7065	1200				48
tesa® ACX ^{plus} 7066	1500				54
tesa® ACX^{plus} 707x					
tesa® ACX ^{plus} 7072	500	Black	Foamed pure acrylic		27
tesa® ACX ^{plus} 7074	1000				30
tesa® ACX ^{plus} 7076	1500				32
tesa® ACX ^{plus} 7078	2000				37
tesa® ACX ^{plus} 70725	2400				37
tesa® ACX ^{plus} 70730	2900				38
tesa® ACX ^{plus} 70740	3900				38
tesa® flameXtinct 4506x					
tesa® flameXtinct 45063	800	White	Filled pure acrylic		32
tesa® flameXtinct 45065	1200				37

Are you looking for
more information?

Simply scan this QR-code or [click here](#) for more technical features and the typical performance characteristics of our double-sided acrylic foam tapes or contact your local tesa® sales representative.





Certifications

Our company is focused on international quality, environmental, and occupational safety standards.

Please find more information regarding our certifications at:
www.tesa.com/certifications

tesa SE
Phone: +49 40 88899 0
tesa.com/company/locations

tesa.com